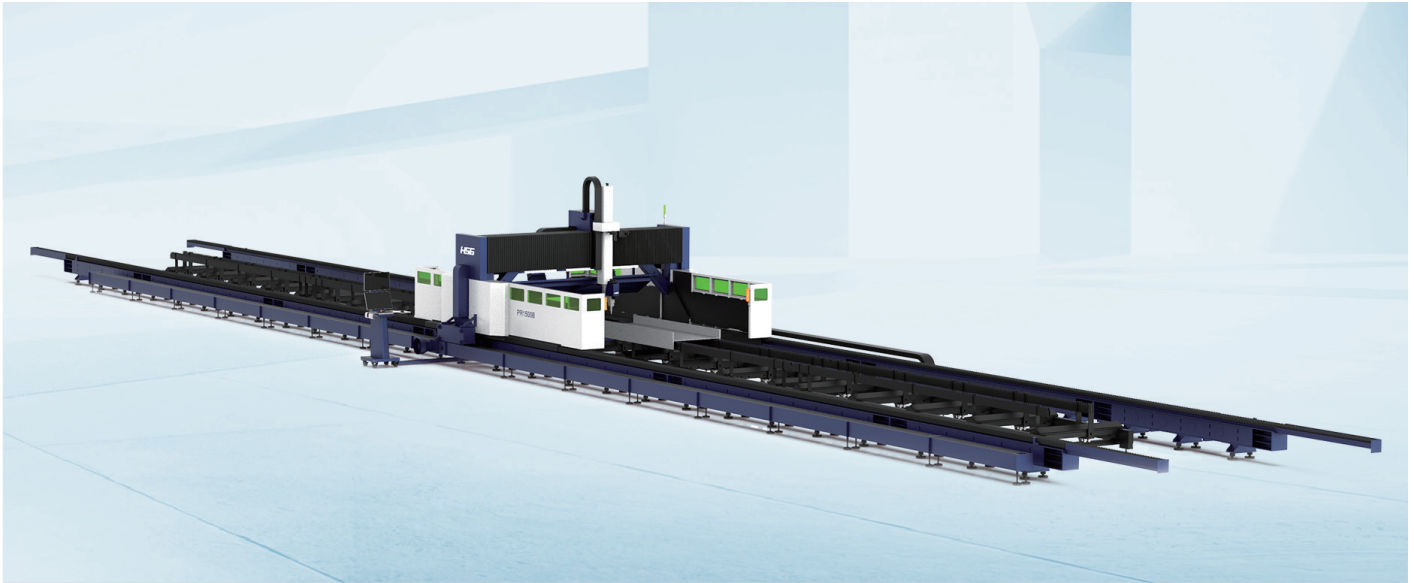


# PR1500B

Profiles Laser Cutting Machine

## SPECIFIC SHEET FIBER LASER CUTTING MACHINE FOR THE STEEL STRUCTURE INDUSTRY



Laser Power

**12-30kW**

Max. Linkage Acceleration

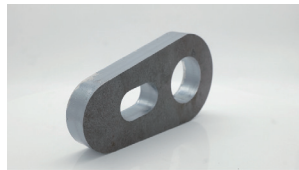
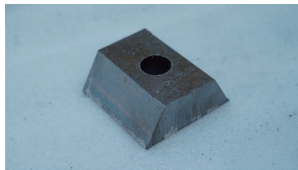
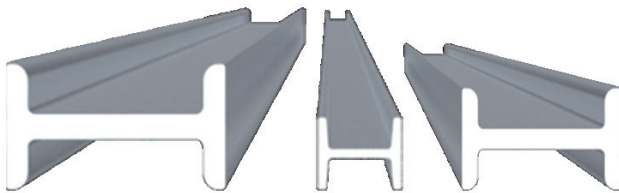
**0.5G**

Max. Linkage Speed

**80m/min**

### PRODUCT OVERVIEW

Three-in-one Processing of Profiles, Sheets, and Bevel Cutting.



PR1500B laser cutting machine combines sheets, profile, and bevel cutting to meet the processing needs of the steel structure industry. In addition to straight cutting, it can also achieve bevel cutting for subsequent welding operations, saving you investment costs.

### TYPICAL PROCESSING

Flexible Processing Solutions for Large-Scale Materials



The processing width is 3 m, and the length of a single workstation is 14 m, which can be expanded to 28 m for dual workstation processing. It can process various sizes of steel sections, solving the pain point of high difficulty in cutting large-sized workpieces.

**CUT EASIER**

## One-Stop Specialized Solutions For Section Steel Cutting

Real-time measurement and compensation of section steel workpieces and drawings will be done through coarse positioning + fine positioning. The nesting software for the PR1500B series has strong compatibility with Tekla, users can enjoy intelligent control system through simple operations.

**SAVE YOUR TIME**

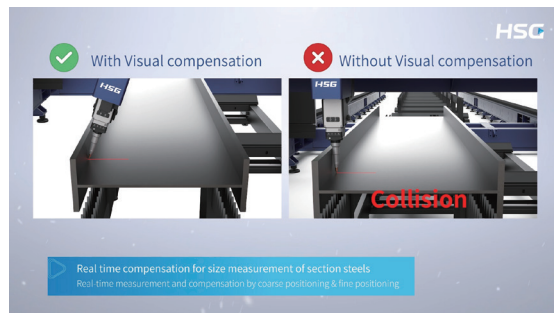
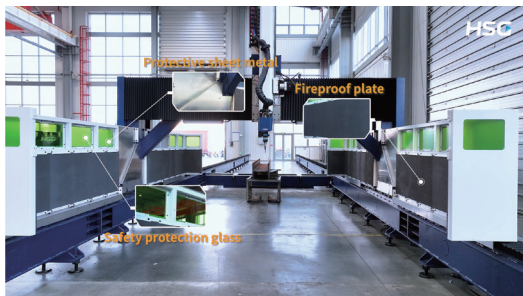
## High-efficient Cutting Processing

High nesting utilization ratio as famous nesting software. Simple operation with drawing function and support manual and automatic nesting. Support different materials and thicknesses categorized typesetting. Excel batch import.

**CUT MORE STABLE**

## Real time Compensation for Size Dimensions of Section Steel

Real time measurement and compensation of structural steel workpieces and drawings through coarse positioning and fine positioning. At the same time, it can avoid falling collisions and cutting head collisions, ensuring cutting quality and equipment safety.

**CARE YOUR SAFETY**

## Multiple Safety Protection

There are protective sheet metal on both sides of the beam, effectively blocking the splashing of cutting sparks. Equipped with anti-burning sheet. PR1500B Series can offer heat protection without heat damage worry. The safety protection glass on both sides allows for real-time observation of cutting conditions while providing protection.

## TECHNICAL PARAMETERS

Model	PR1500B
Laser Power	12-30kW
Machining Area (Length×Width) (Vertical cutting)	13000×3500mm (Dual Workstation)
Machining Area (Length×Width) (Bevel Cutting)	12000×3000mm (Dual Workstation)
Max. Linkage Speed	80m/min
Maximum Acceleration	0.5G
Maximum Length of Profiles	12500mm (Dual Workstation)

\*Information and images are for reference only. Final specifications and terms are subject to the contract and may change without notice.